

# Hoogveenherstelmaatregelen Fochteloerveen

Nicko Straathof, Natuurmonumenten, februari 2015



Natuurmonumenten







# Voormalige verbreiding hoogveengebied ( Popping, Spek)

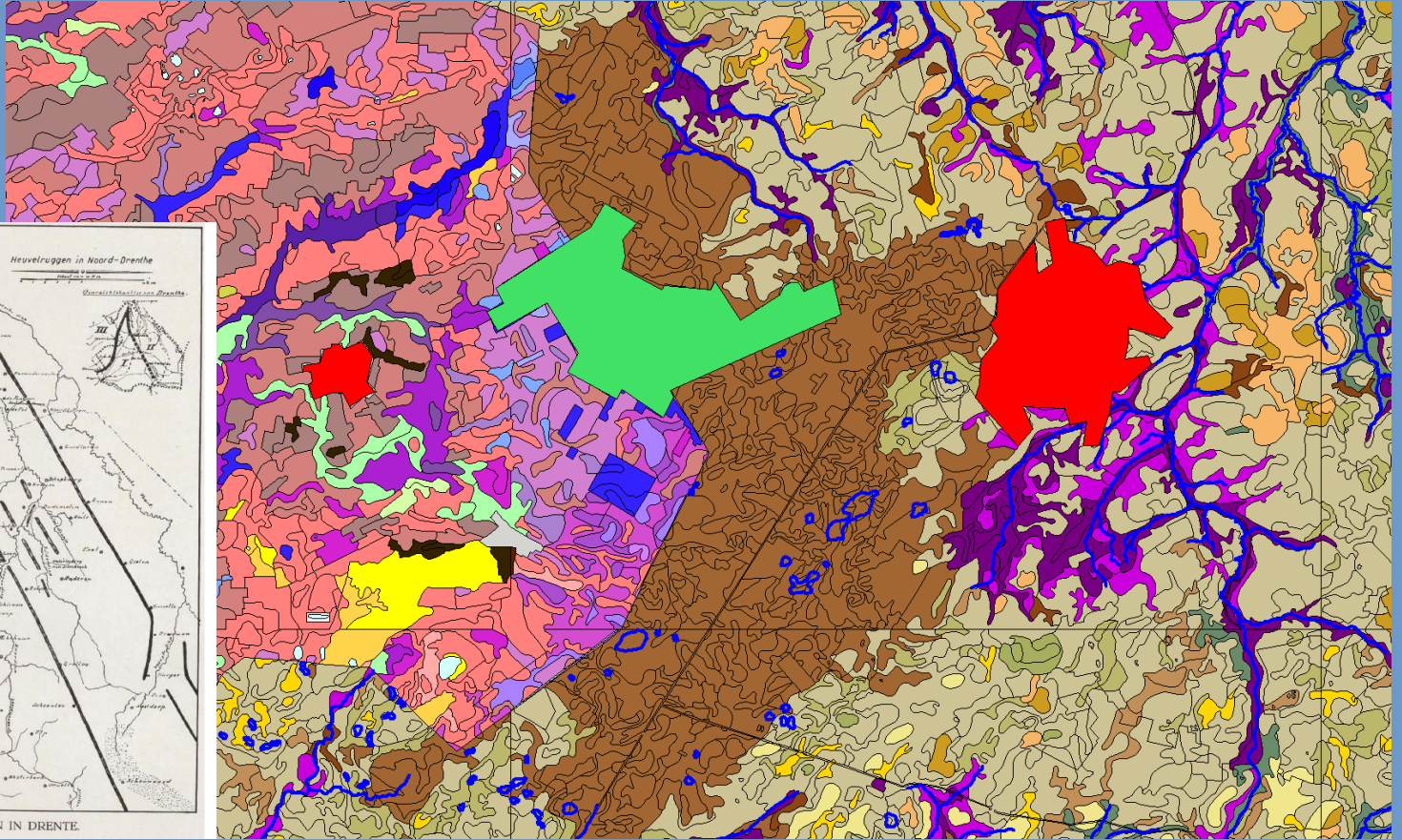
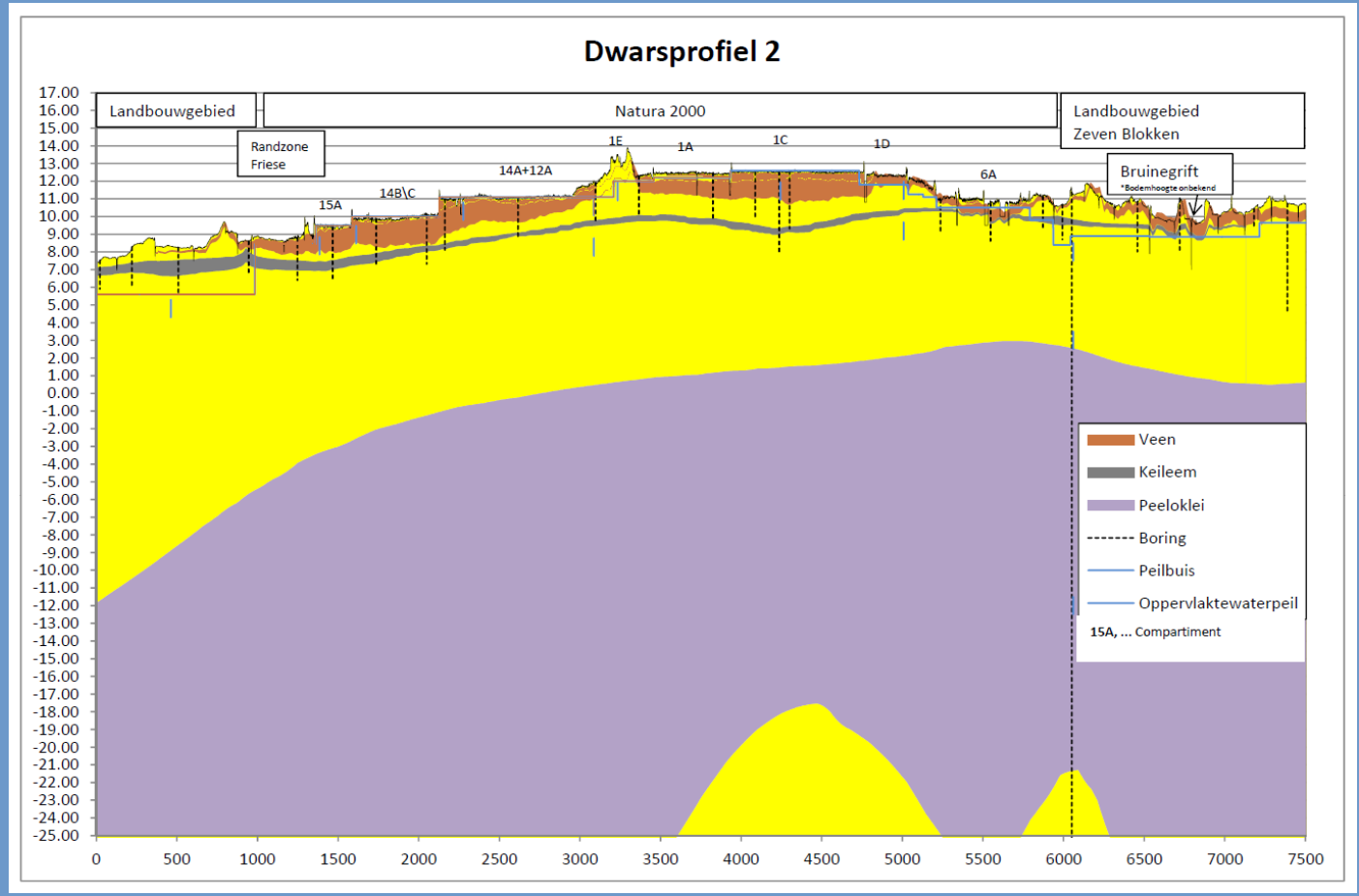


Fig. I. Ir. JOH. v. VEEN, HEUVELRUGGEN IN DRENTE.

# Dwarsdoorsnede langs de grens Dr./Fr.

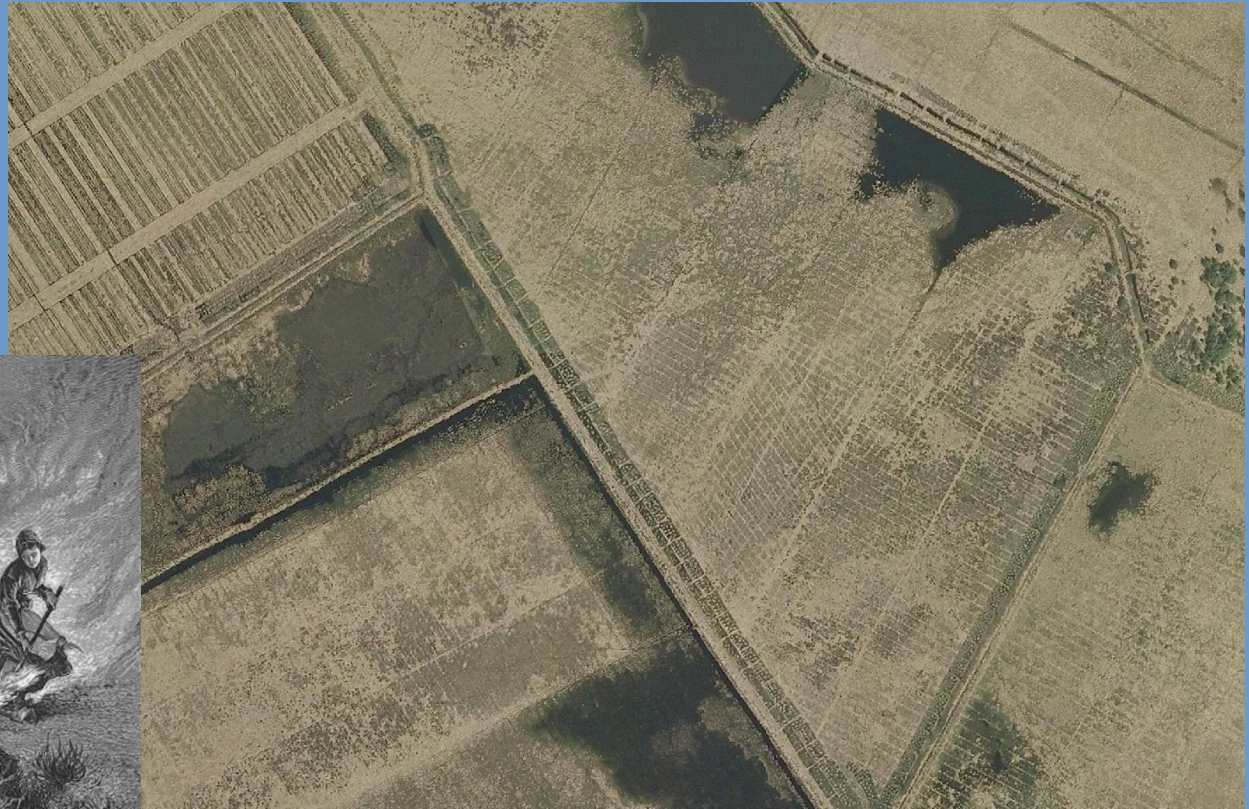








Boekweitbrandcultuur,  
volgens D. lit een  
Nederlandse vinding !





## Machinale vervening tot in de 80-er jaren





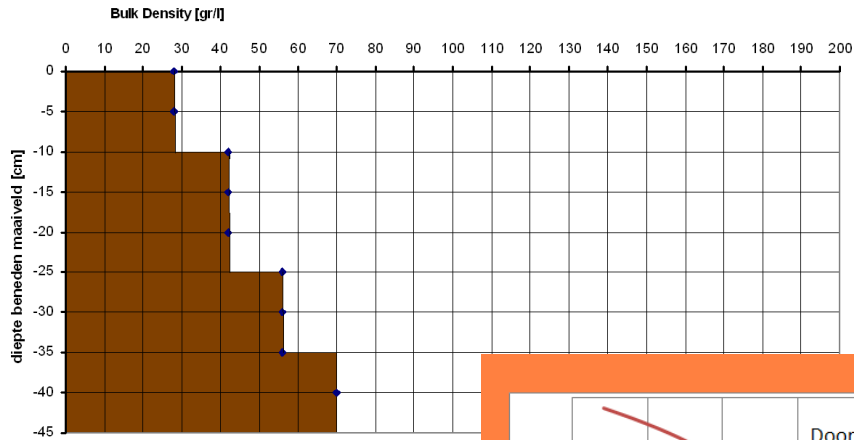
Daling van het oorspronkelijke maaiveld  
Boekw.-brandcultuur. : 1-2 m.  
Vervening : tot 7 m.  
Compactie: ?



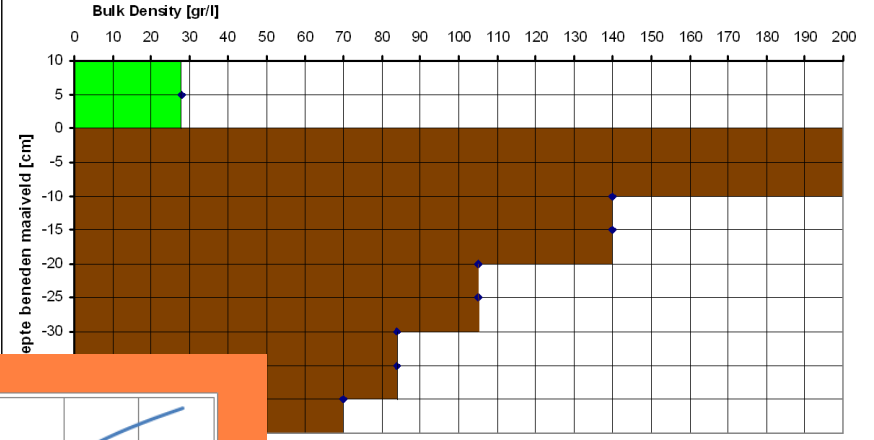


# In plaats van acrotelm/catotelm, een veraarde catotelm

## Bodemdichtheid Acrotelm (Romanov,1968)



## Bodemdichtheid Fochteloeveen



diepte beneden maaiveld

verdroogd hoogveen

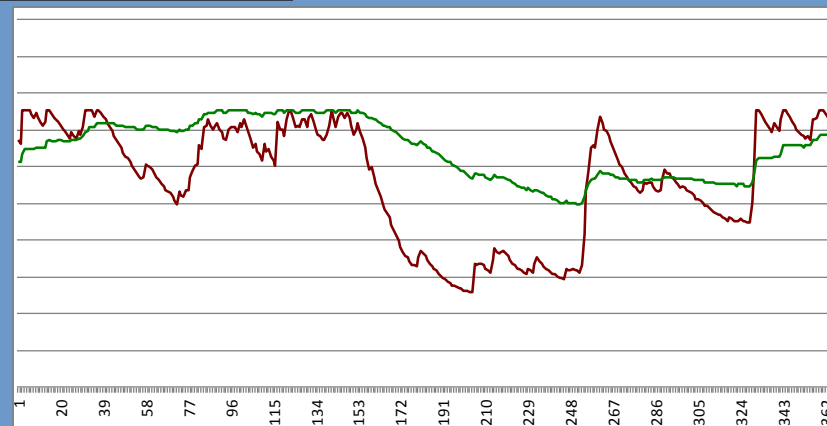
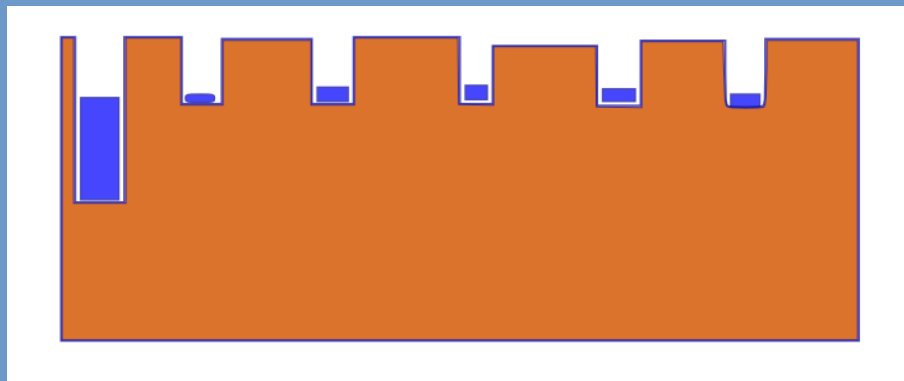
Doorlatendheid  
Bergingscoëfficiënt

levend hoogveen



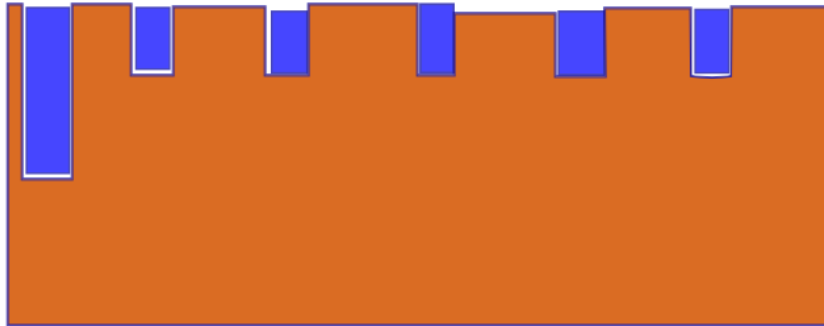


## Grondwaterdynamiek vroeger en nu

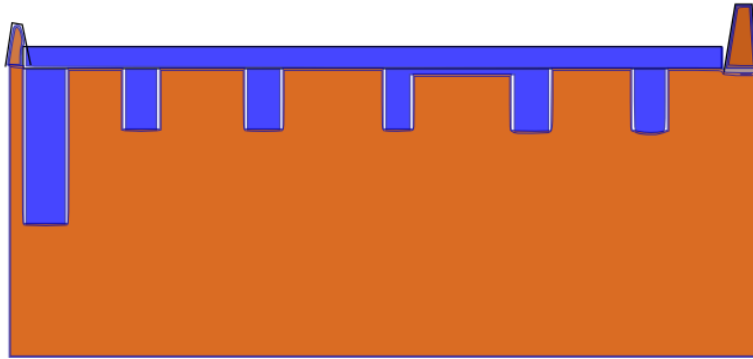




# Grondwaterdynamiek Afdammen sloten en greppels



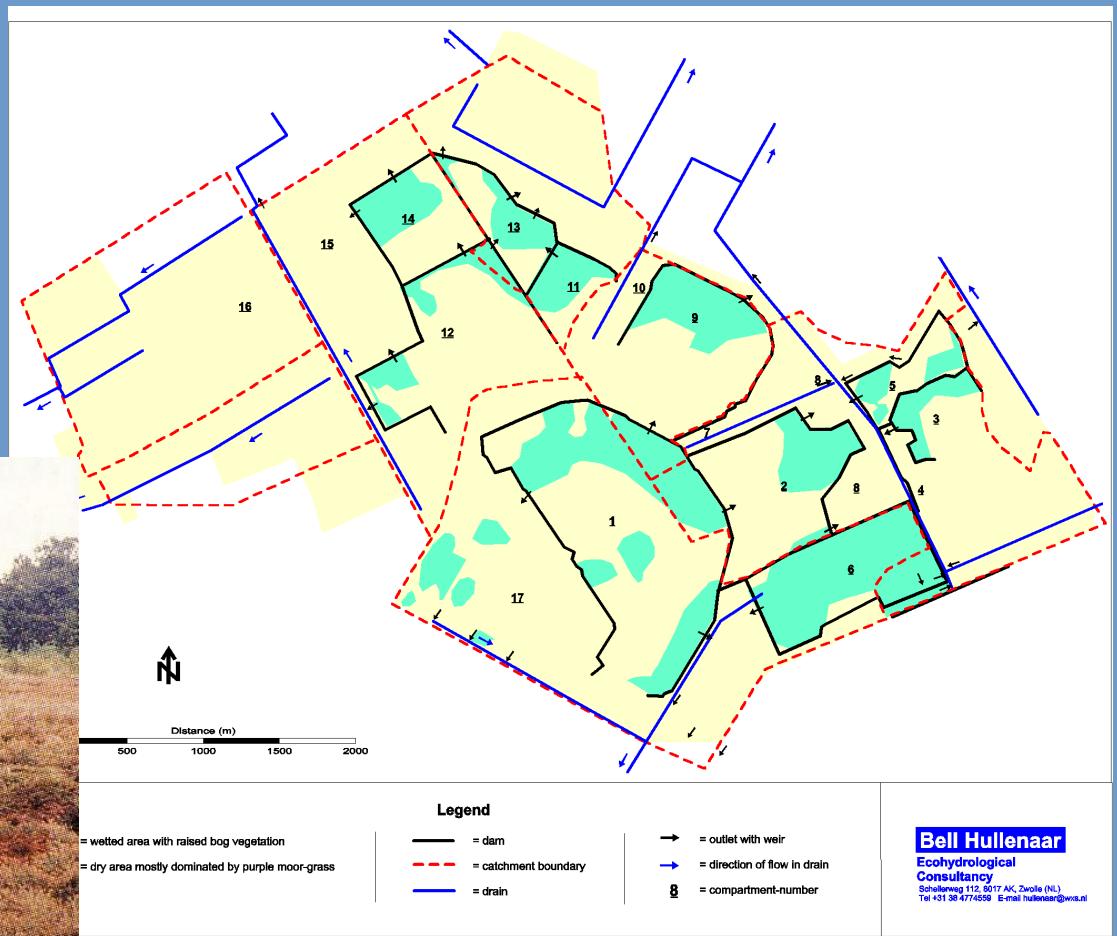
# Grondwaterdynamiek Dammen op maaiveld





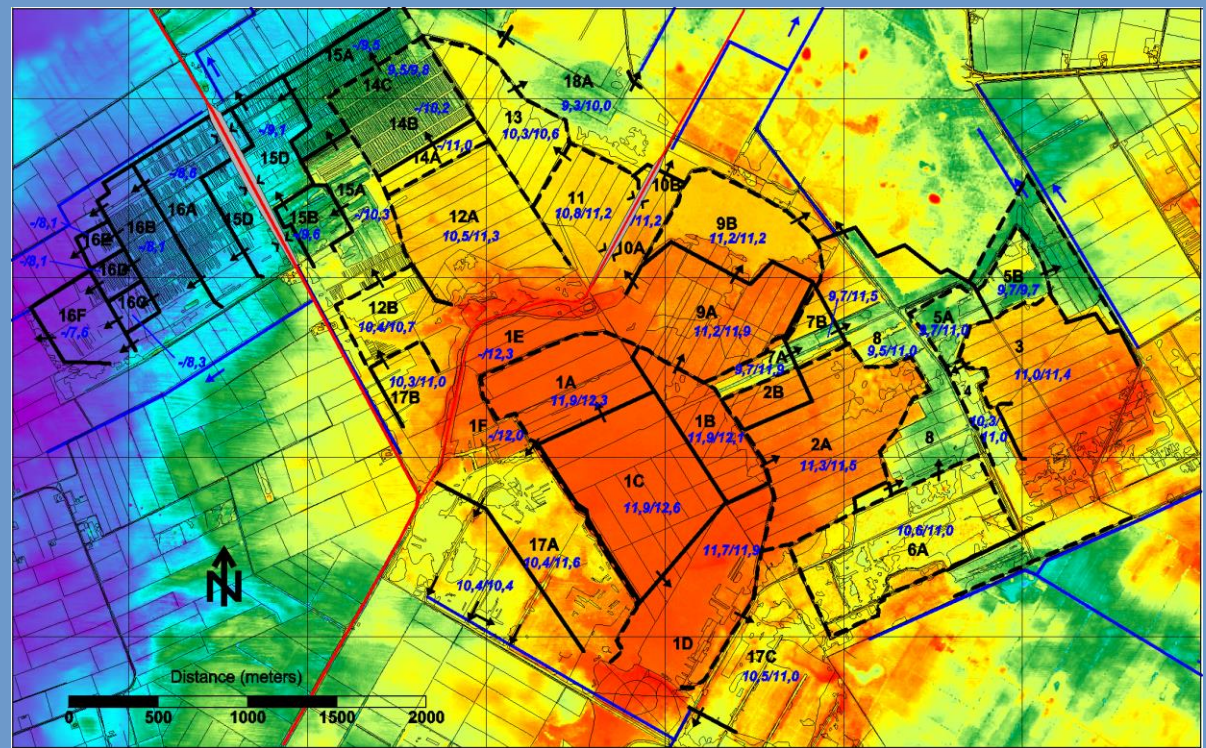
# 1<sup>e</sup> Dammenplan 1983

DTM : 1punt/ha.



# 2<sup>e</sup> Dammenplan 1999

## AHN-1: 1p./5x5m

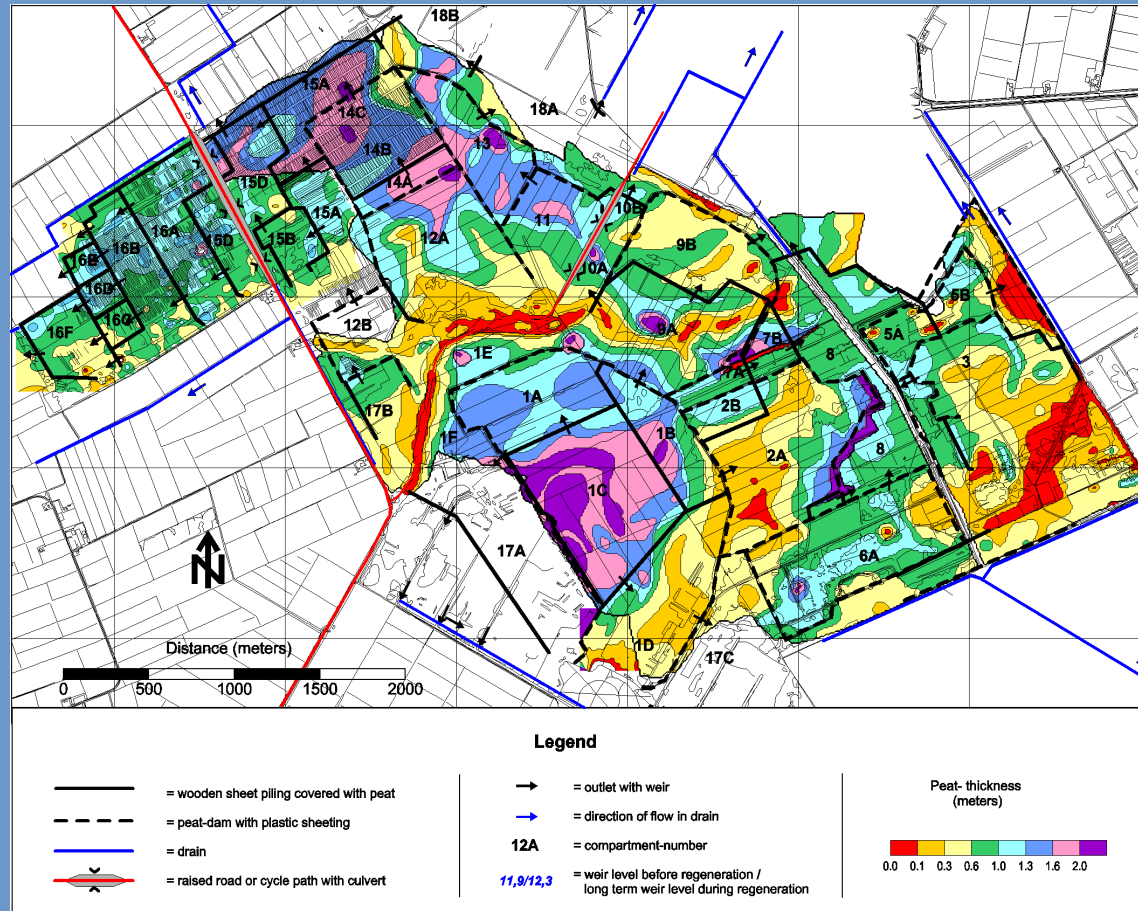


**Legend**

	= wooden sheet piling covered with peat		= outlet with weir	<p>Height (metres above sea level)</p> <p>8.5 9.0 9.5 10.0 10.5 11.0 11.5 12.0 12.5</p>
	= peat-dam with plastic sheting		= direction of flow in drain	
	= drain	<b>12A</b>	= compartment-number	
	= raised road or cycle path with culvert	<b>11,9/12,3</b>	= weir level before regeneration / long term weir level during regeneration	



# Dikte restveenlaag als hulpinformatie



# Damwanden van hout



## Legend

- = dam
- - - = catchment boundary
- = drain
- = outlet with weir
- = direction of flow in drain
- ⊗ = compartment-number

**Bell Hullenaar**

**Ecophysiological**

**Consultancy**

Schildweg 112, 5917 AK, Zoelde (NL)

Tel +31 38 474359 E-mail hullenaar@bwa.nl

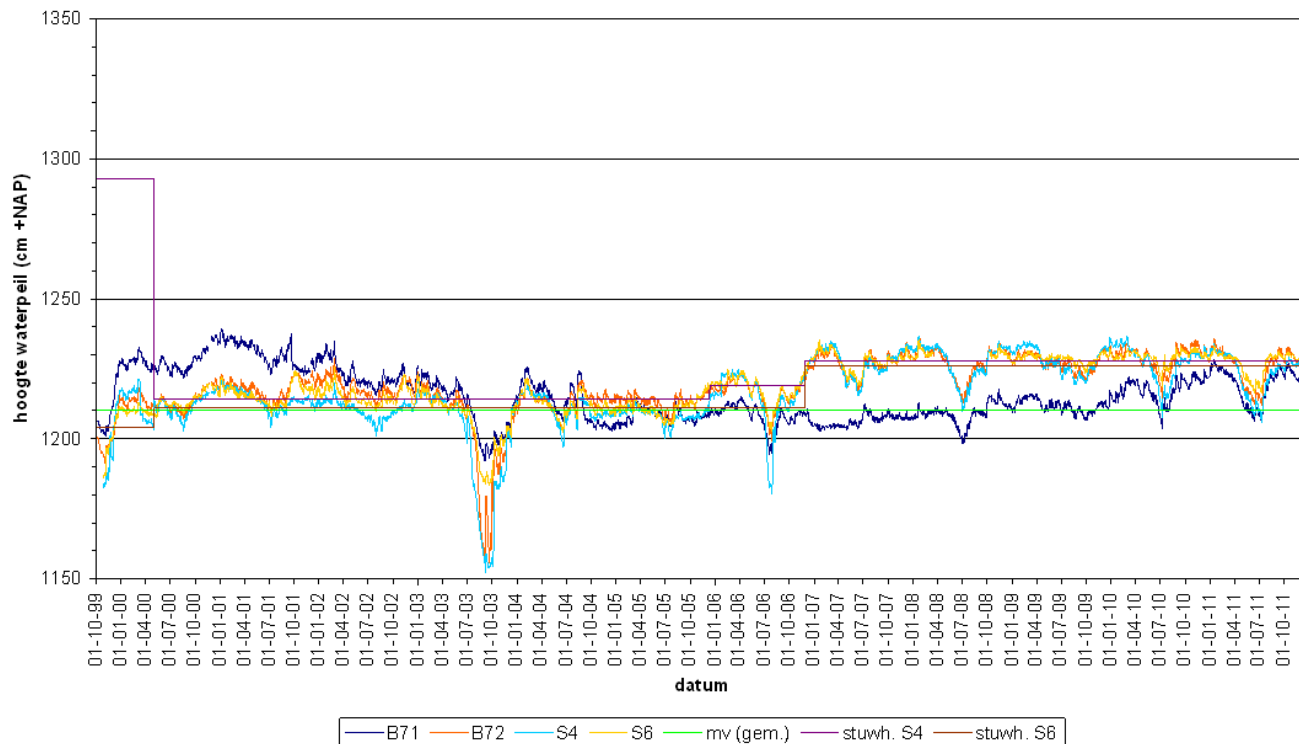


Natuurmonumenten

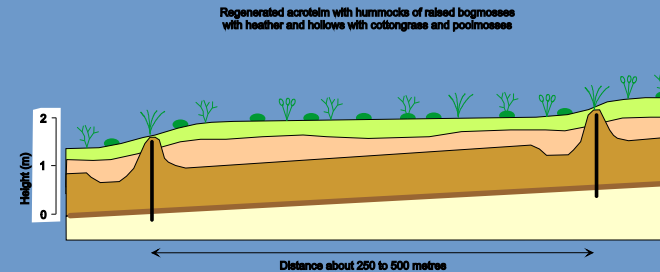
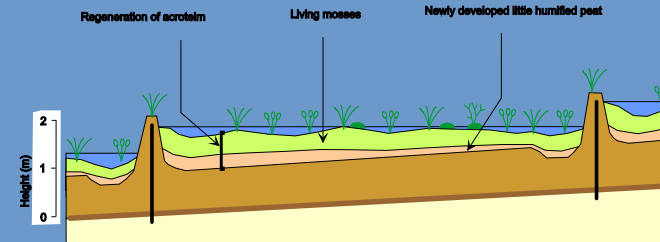
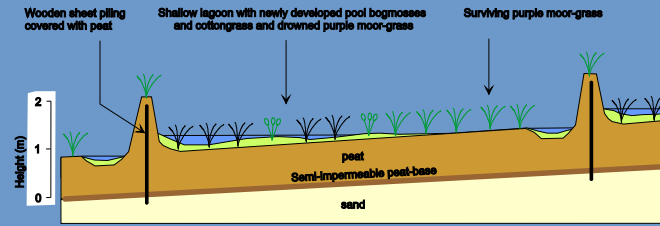


# Grondwaterdynamiek Reactie op stuwpeilverhoging

fig. a: Fochteloërveen Compartment 1C - Verloop waterstanden t/m 2011

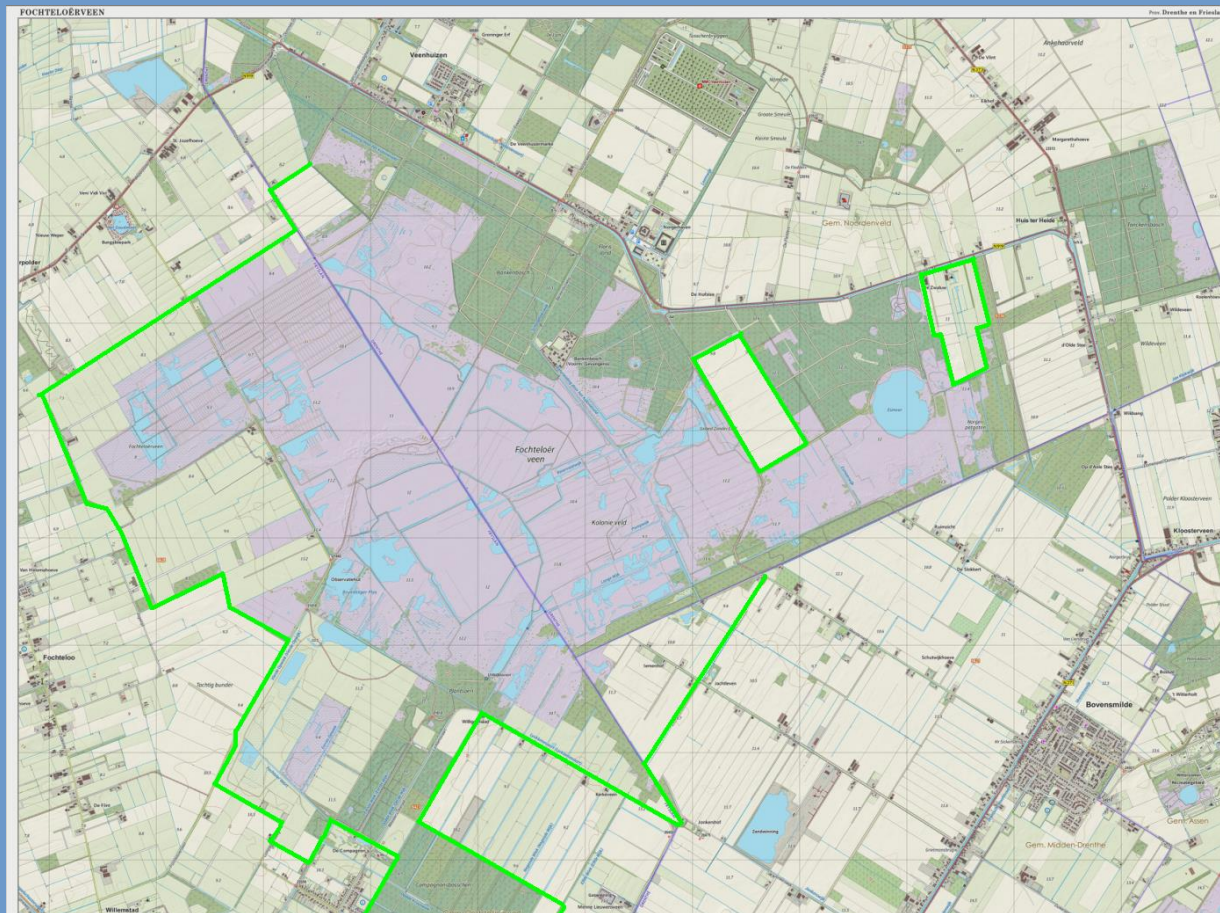


# Acrotelmvorming dmv verlanding



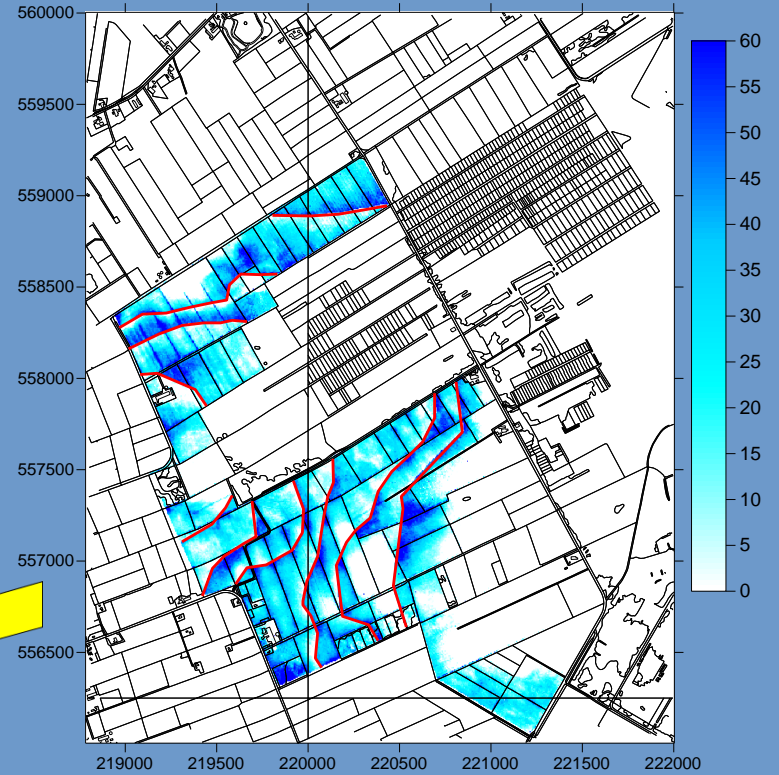
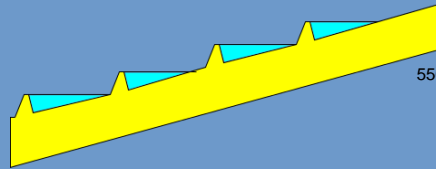
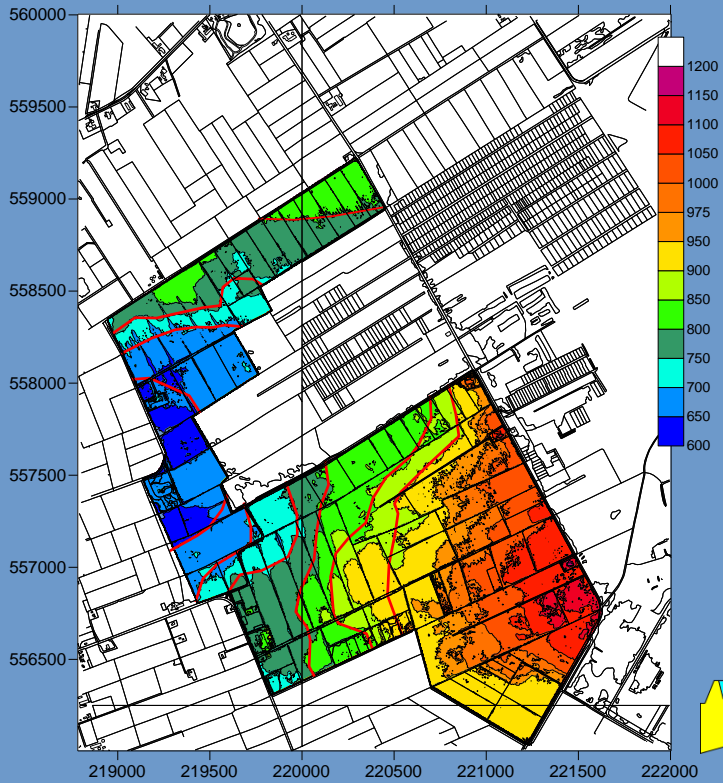


# Inrichting landbouwgebieden in de Fr. Buitenrand



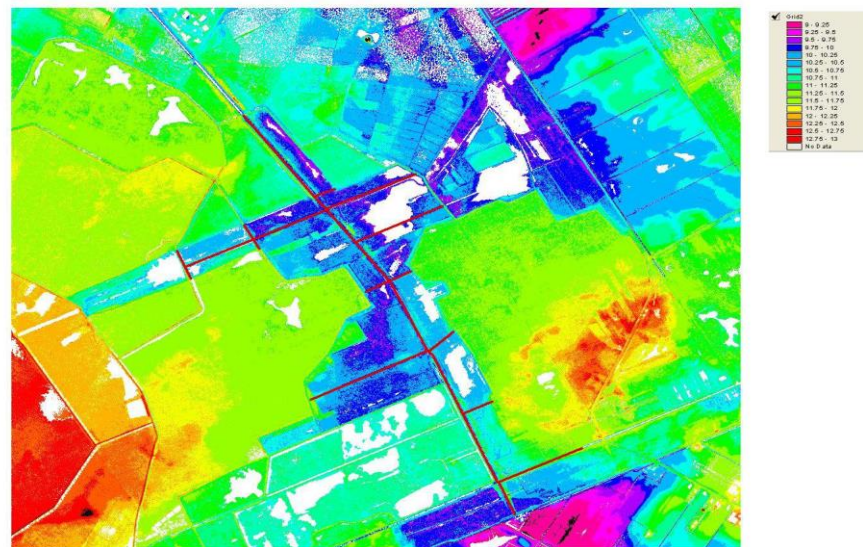
maaiveldhoogte [cm+NAP] en ligging kaden (50 cm interval )

waterdiepte [cm+mv] bij waterstand op kaderand

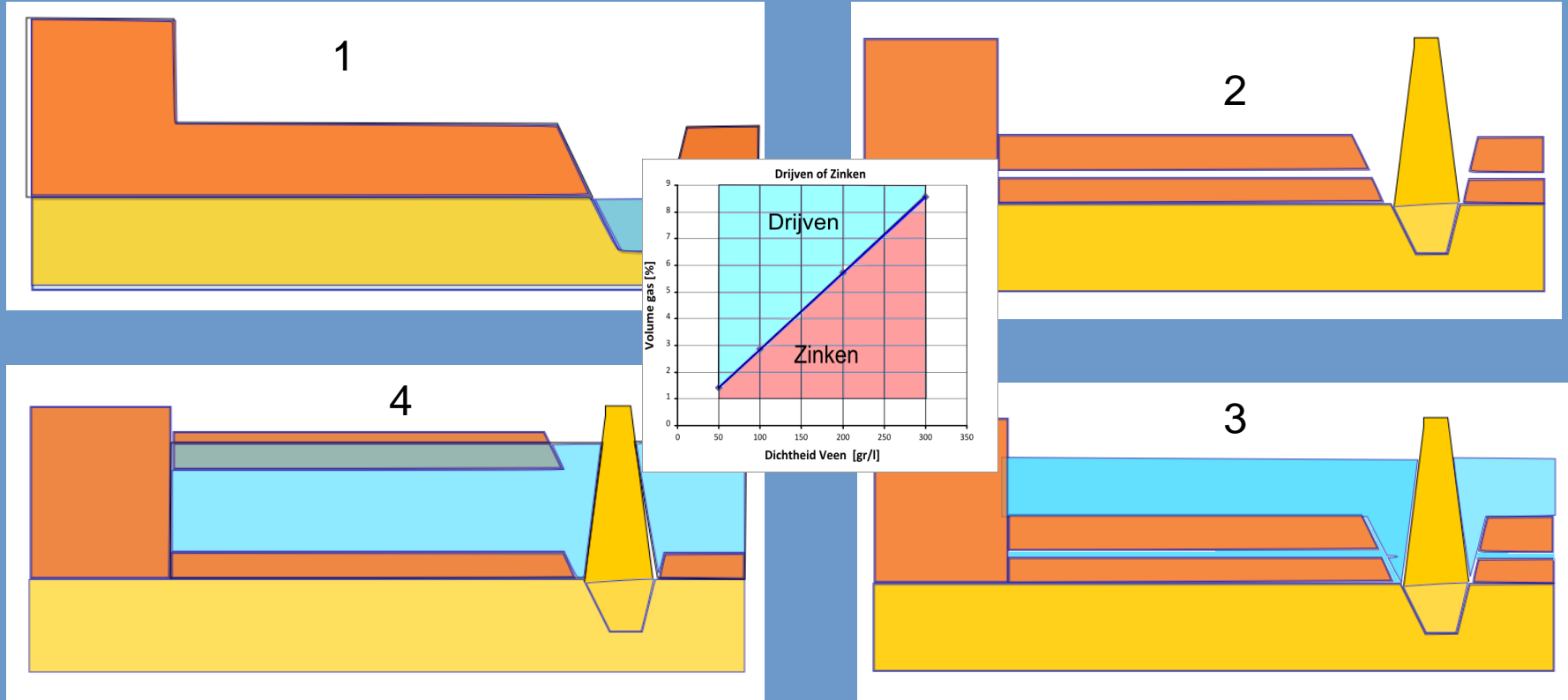




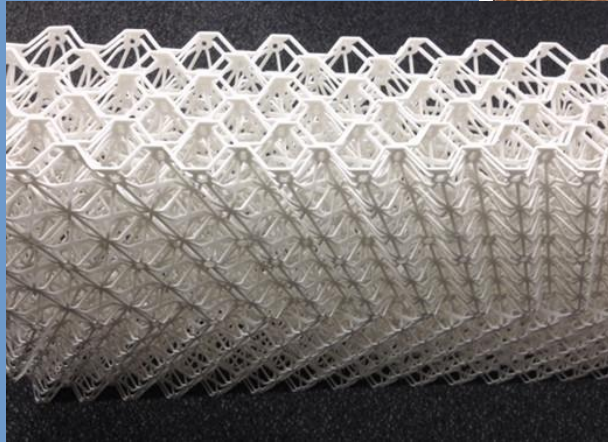
# Inrichting Slenk Schaaphokswijk



# Trilveen ontwikkeling over 60 ha.



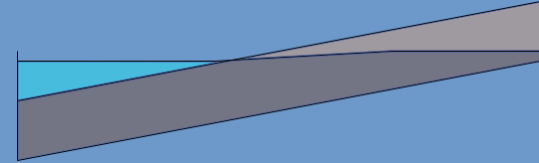
Verlanding mbv  
“patatmatten”





# Knelpunten

- Maaiveldsverschillen: Inundatie – Berken
- Dominantie en persistentie pijpestrootje
- Geconcentreerde ipv Diffuse afstroming ( verdroging benedenstrooms v.damwanden)
- Wegzijinging >> 40 mm/jr
- Ontbreken verlanding interne waterplassen (Guanotrofie door Ganzen/Eenden)



# Aanbevelingen

- Stimuleren verlanding veenplassen ( CO2 additie ?, drijfmatten ?, Veenplaggen ?)
- Spagnumkweek en transplantatie
- Hoogveenontwikkeling in laagveen (overgangsvennen)
- Pijpestrootje als Brasem



Dank u wel. Vragen?



Natuurmonumenten